



# Right of Way Improvement Manual

## 10 YEAR UPDATE



Seattle Freight Advisory Board  
Susan McLaughlin AICP, LEED AP  
August 19, 2014



# SDOT's mission & vision

Mission: delivering a first-rate transportation system for Seattle.



Vision: a vibrant Seattle with connected people, places, and products.

# SDOT's core principles



# Presentation overview

- Right of Way Improvement Manual- Authority
- Background
- Policy Framework
- Vision for update
- General Scope of work
- Timeline
- Stakeholder involvement

# ROWIM – Authority & Purpose

“Establishes and documents the policies, procedures and practices for how the City manages physical improvements in the street right of way and on public property”.



# Background

- Developed in 2005
  - was recognized as best practice at that time
  - One stop resource for private contractors
  - Web interface and numerous links to relevant codes, standards, etc.
- Two minor updates since 2005
  - (2008 and 2012)

# Relationship to Other Plans & Standards

- Seattle Municipal Code
- Standard Plans and Specifications
- Federal, State, and Regional regulatory requirements
- City-wide plans, such as the Comprehensive Plan, Climate Action Plan, SDOT Pedestrian, Transit and Bicycle Modal Plans, and the Storm Water Code.

**Manual on Uniform  
Traffic Control Devices**  
for Streets and Highways  
2009 Edition

AMERICAN ASSOCIATION OF  
STATE HIGHWAY AND  
TRANSPORTATION OFFICIALS

**AASHTO**  
THE VOICE OF TRANSPORTATION

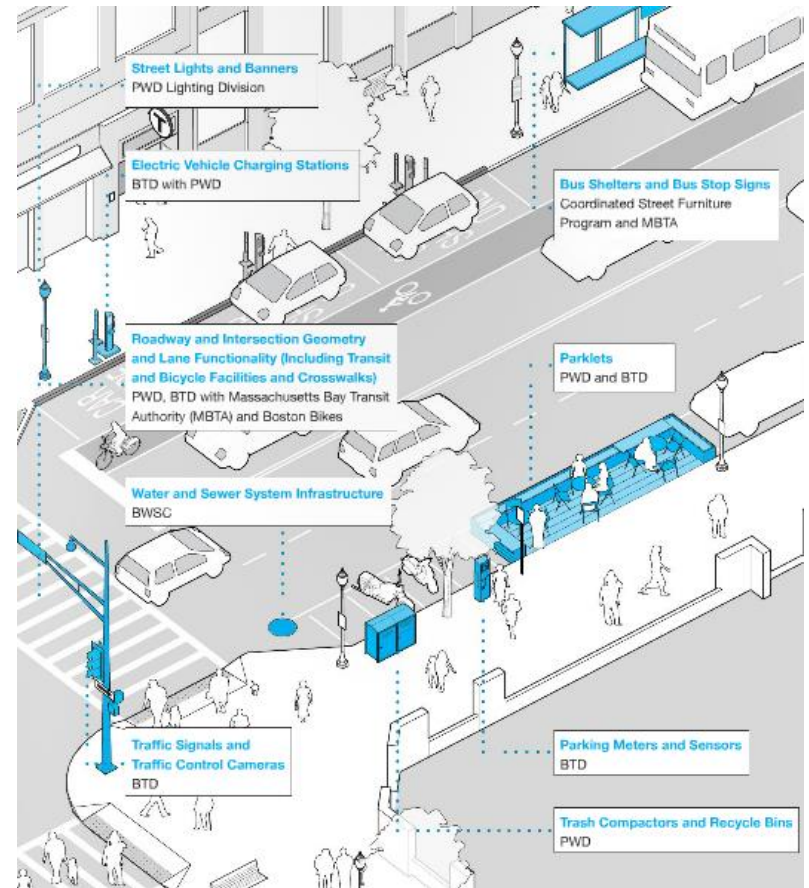


Seattle  
2035  
YOUR CITY, YOUR FUTURE



# Key Outcomes

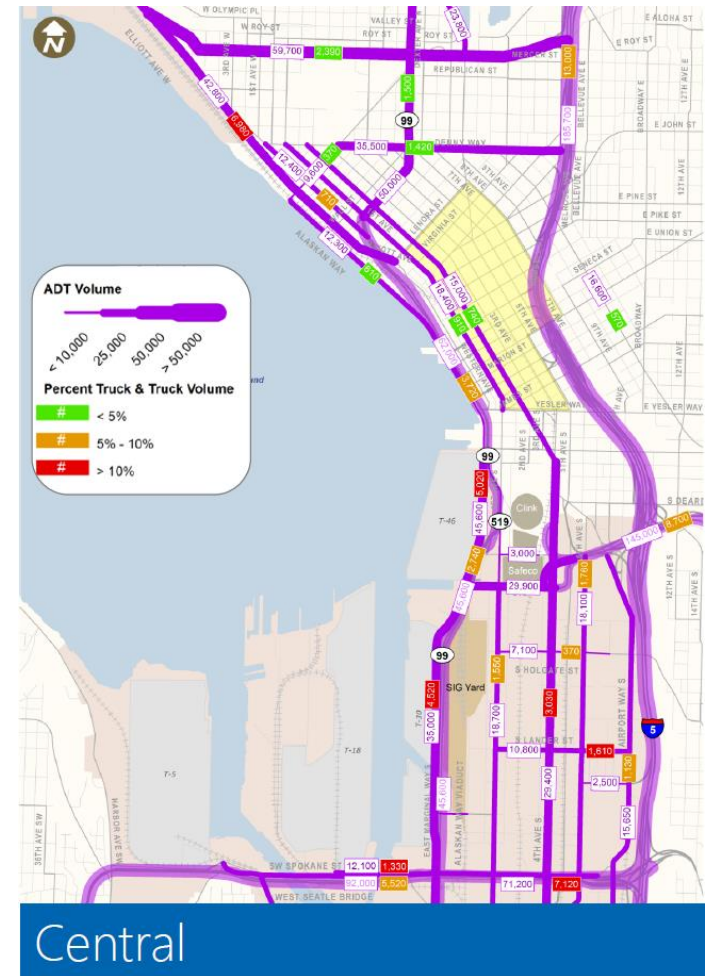
- A revised manual structure and organization
- Representative of SDOT's core principles, policies, and initiatives
- A multi-disciplinary tool that balances competing interests with clarity and consistency
- An illustrative and interactive web based manual with a modern, easy to navigate user interface





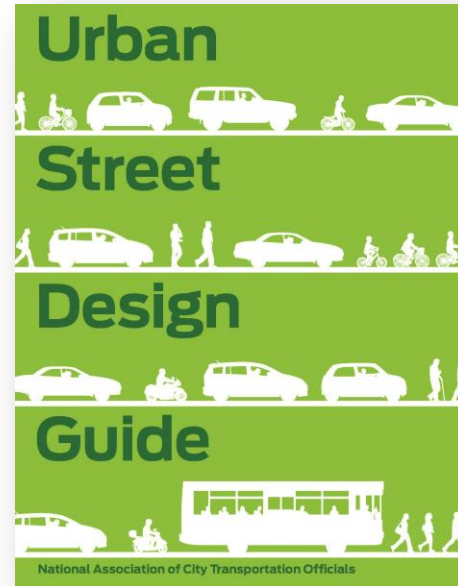
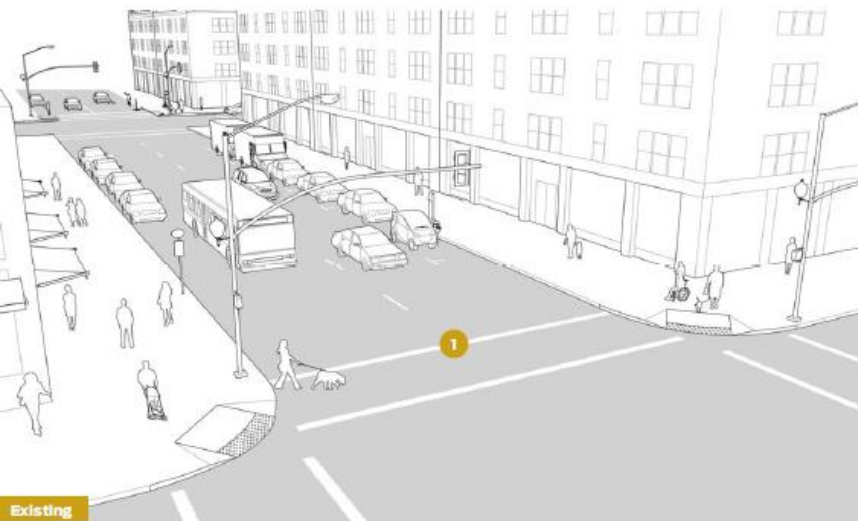
# Emerging Opportunities

- *Illustrative* Street Typologies (major truck streets, industrial access, etc)
- Construction Coordination
- Modal Plan Design Criteria (FMP, PMP, TMP, BMP)
- Development Review Process Improvements
- Interim Design Strategies
- Crime Prevention Through Environmental Design
- Accessibility



Freight Access Plan: Map of Truck Volumes

# Street Manual Examples



*Streets need to convey people, goods, and services, but should also serve as front yards, parks, playgrounds, and public spaces to accommodate the ever-expanding set of urban needs.*

# Street Manual Examples



New York City Street Design Manual, 2010

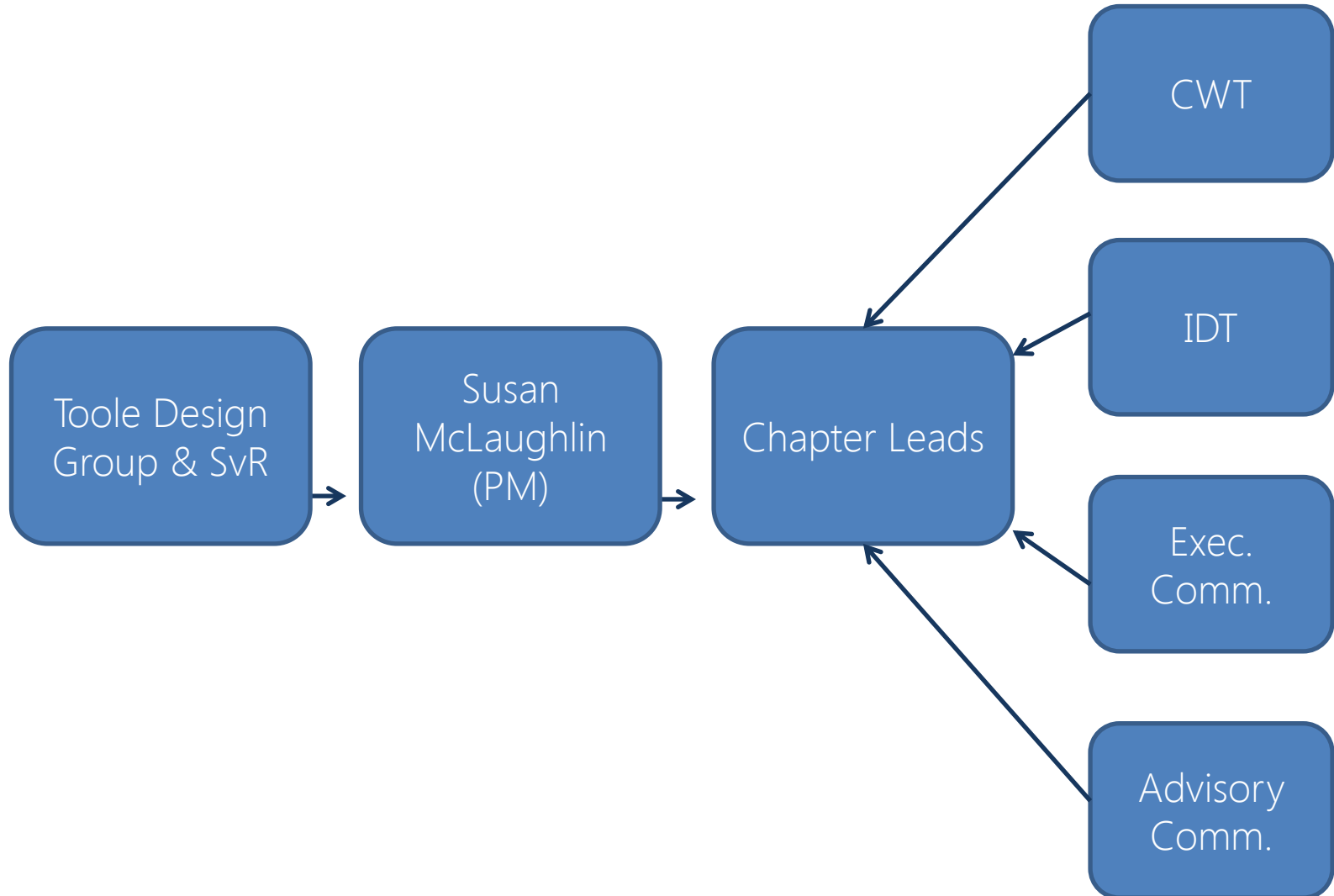


Boston Complete Streets Guidelines, 2012



San Francisco Better Streets Plan 2010

# Review and Input Process





# Next steps



# Next steps

June- Aug	Existing Manual Review/Format Evaluation
Closes Aug 31	User Survey
September	Establishment of IDT and Advisory Groups
September	Stakeholder Focus Groups
Sept-Nov	Content Development & Graphics
Aug- May '15	Web page development and implementation
1 <sup>st</sup> Quarter '15	Adopt Update via Director's Rule

# Questions?

Susan.mclaughlin@seattle.gov | (206) 733-9649

<http://www.seattle.gov/transportation>

<http://www.seattle.gov/transportation>

